

MICHIGAN

SHALE GAS CAN LEAD TO NEW INVESTMENT, JOBS, WAGES AND TAX REVENUE FOR MICHIGAN



Access to vast, new supplies of natural gas from shale deposits is one of the most dramatic domestic energy developments in the last 50 years. The economics of shale gas not only create a competitive advantage for U.S. petrochemical manufacturers, but also lead to greater U.S. investment and industry growth.



A **\$3.2 BILLION** investment in an ethylene production complex in Michigan will generate a total of **\$4.8 BILLION** in additional chemical industry output, bringing the state's industry revenues to more than **\$17 BILLION** and making it the country's **11th largest chemical producing state**.



In Michigan, more than **19,000 permanent jobs** will be created in the chemical industry and throughout the supply chain in everything from trade and craft jobs to highly-skilled knowledge workers.



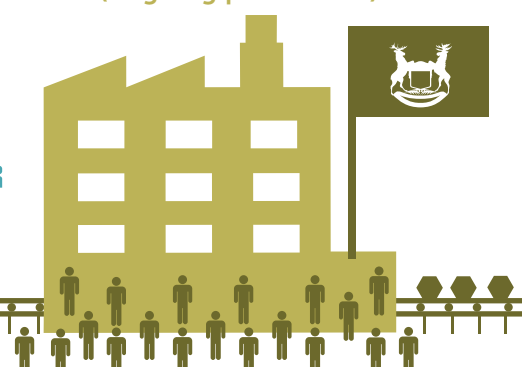
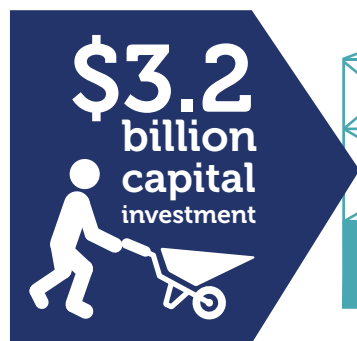
Nearly **\$1.2 BILLION** in wages will go into the pockets of Michigan workers, generating more than **\$162 MILLION** in state tax revenue and more than **\$226 MILLION** in federal revenue.

INVESTMENT PHASE

(building the facility)

OPERATION PHASE

(ongoing production)



\$1.9 billion industry revenue

13,000 American jobs

\$8.2 billion in industry revenue

19,000 American jobs

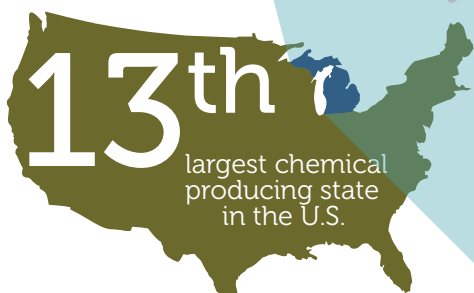
\$55 million in Michigan tax revenue

\$649 million in worker wages

\$162 million in MI tax revenue

\$1.2 billion in worker wages

WHY MICHIGAN?



access to natural gas pipeline from Marcellus Shale to Sarnia, Ontario



access to the Great Lakes



within **500 miles** of U.S. industrial base



excellent **universities**



major **rail systems**

