

# NEW JERSEY

SHALE GAS CAN LEAD TO NEW INVESTMENT, JOBS, WAGES AND TAX REVENUE FOR NEW JERSEY



Access to vast, new supplies of natural gas from shale deposits is one of the most dramatic domestic energy developments in the last 50 years. The economics of shale gas not only create a competitive advantage for U.S. petrochemical manufacturers, but also lead to greater U.S. investment and industry growth.



A **\$3.5 BILLION** investment in an ethylene production complex in New Jersey will generate a total of **\$4.8 BILLION** in additional chemical industry output, bringing the state's industry revenues to more than **\$30 BILLION** and making it the country's **7th largest chemical producing state**.



In New Jersey, more than **16,000 permanent jobs** will be created in the chemical industry and throughout the supply chain in everything from trade and craft jobs to highly-skilled knowledge workers.



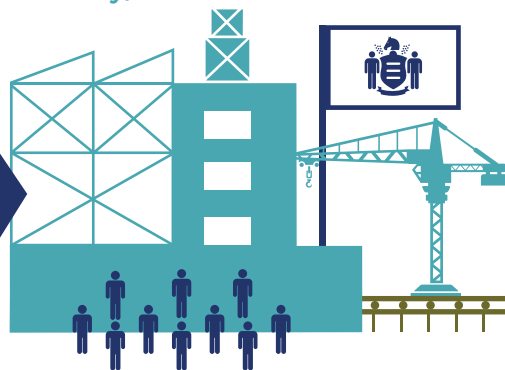
Nearly **\$1.3 BILLION** in wages will go into the pockets of New Jersey workers, generating **\$181 MILLION** in state tax revenue and **\$281 MILLION** in federal revenue.

## INVESTMENT PHASE

(building the facility)

## OPERATION PHASE

(ongoing production)



**\$1.7 billion** industry revenue

**10,000** American jobs

**\$8.8 billion** in industry revenue

**16,000** American jobs

**\$50 million** in New Jersey tax revenue

**\$662 million** in worker wages

**\$181 million** in New Jersey tax revenue

**\$1.3 billion** in worker wages

## WHY NEW JERSEY?



**\$26 billion** in revenue

and more than **57,000** New Jersey jobs

long standing history with petrochemicals



deep water ports



excellent universities

