

PENNSYLVANIA

SHALE GAS CAN LEAD TO NEW INVESTMENT, JOBS, WAGES AND TAX REVENUE FOR PENNSYLVANIA



Access to vast, new supplies of natural gas from shale deposits is one of the most dramatic domestic energy developments in the last 50 years. The economics of shale gas not only create a competitive advantage for U.S. petrochemical manufacturers, but also lead to greater U.S. investment and industry growth.



A **\$3.2 BILLION** investment in an ethylene production complex in Pennsylvania will generate a total of **\$4.8 BILLION** in additional chemical industry output, bringing the state's industry revenues to more than **\$29 BILLION** and making it the country's **7th largest chemical producing state**.



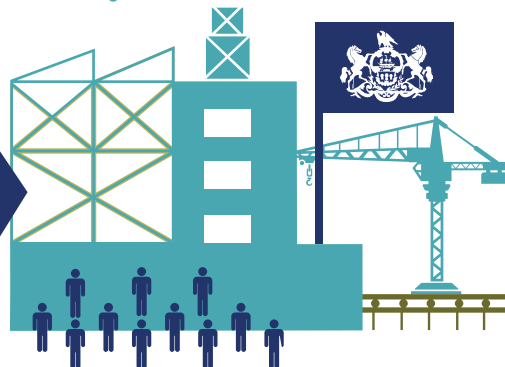
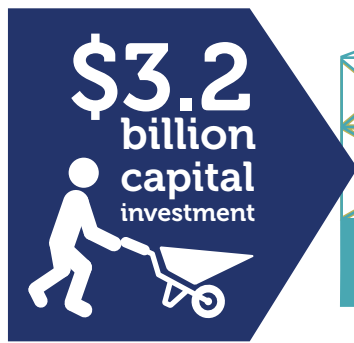
In Pennsylvania more than **17,000 permanent jobs** will be created in the chemical industry and throughout the supply chain in everything from trade and craft jobs to highly-skilled knowledge workers.



More than **\$1.2 BILLION** in wages will go into the pockets of Pennsylvania workers, generating more than **\$140 MILLION** in state tax revenue and more than **\$240 MILLION** in federal revenue.

INVESTMENT PHASE (building the facility)

OPERATION PHASE (ongoing production)



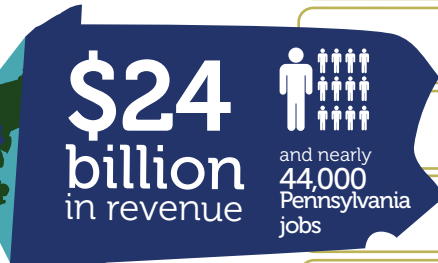
\$1.7 billion industry revenue
\$42 million in Pennsylvania tax revenue

11,000 American jobs
\$627 million in worker wages

\$7.9 billion in industry revenue
\$140 million in Pennsylvania tax revenue

17,000 American jobs
\$1.2 billion in worker wages

WHY PENNSYLVANIA?



- considerable shale **gas deposits**
- access to the **Great Lakes**
- within **500 miles** of U.S. industrial base
- excellent **universities**
- major **rail systems**