

Access to vast, new supplies of natural gas from shale deposits is one of the most dramatic domestic energy developments in the last 50 years. The economics of shale gas not only create a competitive advantage for U.S. petrochemical manufacturers, but also lead to greater U.S. investment and industry growth.



An **\$8.5 BILLION** investment in new and existing ethylene production infrastructure in Texas will generate a total of **\$18.2 BILLION** in additional chemical industry output, bringing the state's industry revenues to more than **\$123 BILLION**, maintaining it as the country's largest chemical producing state.



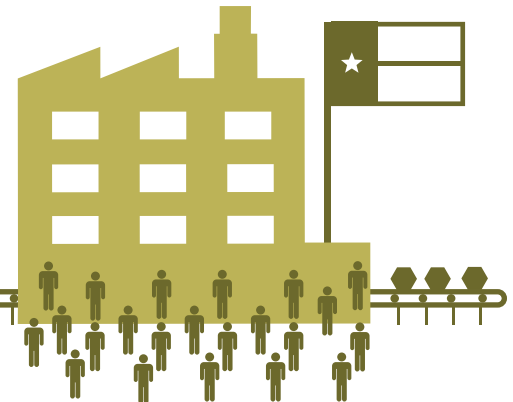
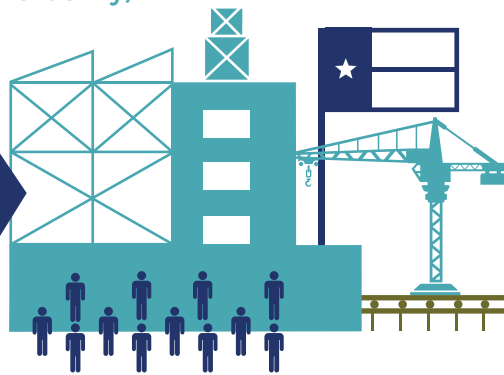
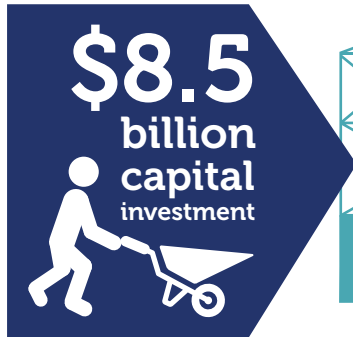
In Texas, more than **81,000 permanent jobs** will be created in the chemical industry and throughout the supply chain in everything from trade and craft jobs to highly-skilled knowledge workers.



More than **\$5.5 BILLION** in wages will go into the pockets of Texas workers, generating **\$779 MILLION** in state tax revenue and more than **\$1 BILLION** in federal revenue.

INVESTMENT PHASE (building the facility)

OPERATION PHASE (ongoing production)



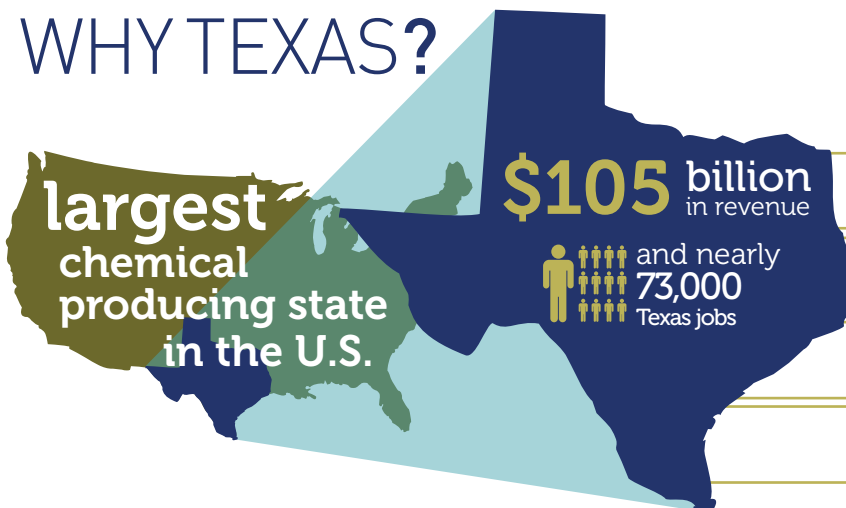
\$7 billion industry revenue
\$176 million in Texas tax revenue

43,000 American jobs
\$2.2 billion in worker wages

\$37 billion in industry revenue
\$779 million in Texas tax revenue

81,000 American jobs
\$5.5 billion in worker wages

WHY TEXAS?



considerable shale gas deposits



access to deep water coastal ports



excellent universities



significant petrochemicals infrastructure

